



学校法人 濱名山手学院
 神戸山手グローバル中学校高等学校
 Kobe Yamate Global Junior & Senior High School
 San Pedro College Davao



GLOBAL MOBILITY PROGRAM

グローバルモビリティプログラム

2026年3月15日～21日

Kobe Yamate Global Junior and Senior High School

THEME:

肩を組む

KATA WO KUMU

MOVING FORWARD
 TOGETHER, AS ONE



SCHEDULE

March 16, 2026	
TIME	ACTIVITIES
9:45 - 10:00	Morning Assembly (<i>Auditorium</i>)
10:00 - 10:35	Welcome and Orientation Program (<i>Auditorium</i>) <ul style="list-style-type: none"> Greetings from Principal Hirai Welcome Speech by Student Council President Intermission Number Video Presentation Viewing
10:30 - 11:00	Guided Campus Tour <ul style="list-style-type: none"> Auditorium → Japanese Manners Room → Koko Room → Sky Room (Cafeteria) → Self-Study Room → Ground → Auditorium
11:00 - 12:00	Icebreaker, Self-Introductions, and Coordination Activities (<i>Auditorium</i>)
12:00 - 13:00	LUNCH BREAK (<i>Sky Room</i>)
13:15 - 14:05	English and Programming Class (<i>Computer Classroom</i>)
14:15 - 15:05	Cultural Experience (<i>Room 123</i>) <ul style="list-style-type: none"> Flower Arrangement
15:15 ~	Reflection and Wrap-up (<i>ICT Classroom</i>) <ul style="list-style-type: none"> Reminders and notices for the upcoming days

March 17, 2026	
TIME	ACTIVITIES
8:30 - 8:45	Morning Assembly (<i>ICT Classroom</i>)
8:45 - 10:35	English and Cooking Class (<i>Home Economics Room</i>) <ul style="list-style-type: none"> Strawberry Daifuku
10:45 - 11:35	English and Recreation (Dance) Immersion (<i>2nd Gymnasium</i>) <ul style="list-style-type: none"> Instagram Video Coverage
11:40 - 12:30	LUNCH BREAK (<i>Sky Room</i>)
12:30 - 13:30	Presentation Preparation and Sharing of Reflections and Learning Experiences (<i>ICT Classroom</i>) <ul style="list-style-type: none"> Prepare presentation slides and outline
13:15 - 16:05	Guided City Tour <ul style="list-style-type: none"> around Kobe-Sannomiya Motomachi
16:15 ~	Return to Incontrale Kobe Minatojima <ul style="list-style-type: none"> Answer the reflection sheet of the day

March 18, 2026	
TIME	ACTIVITIES
8:30 - 8:45	Morning Assembly (<i>ICT Classroom</i>)
8:45 - 9:35	English and E-sports Class (<i>Computer Classroom</i>) <ul style="list-style-type: none"> Valorant
9:45 - 10:35	SPC - KYG Global Course Joint English Activity (<i>ICT Classroom</i>)
10:45 - 11:35	Presentation Preparation and Sharing of Reflections and Learning Experiences (<i>ICT Classroom</i>) <ul style="list-style-type: none"> Prepare presentation slides and outline
11:45 ~	Exchange Discussion of Teaching Methods and Practices <ul style="list-style-type: none"> Filipino Teaching Practices EDU-Port Japan Support Project
12:35 - 13:15	LUNCH BREAK (<i>Sky Room</i>)
13:15 - 14:05	Share Library (<i>Library</i>) <ul style="list-style-type: none"> Japanese Cultural Experience
14:15 - 15:05	Club Experience (<i>Japanese Manners Room / Archery Range</i>) <ul style="list-style-type: none"> Koto / Archery
15:15 - 16:05	Cultural Experience (<i>Japanese Manners Room</i>) <ul style="list-style-type: none"> Tea Ceremony
16:15 ~	Reflection and Wrap-up (<i>ICT Classroom</i>) <ul style="list-style-type: none"> Reminders and notices for the upcoming days

March 19, 2026	
TIME	ACTIVITIES
8:30 - 11:00	High School Baseball Opening Ceremony and Chorus Performance (<i>Hanshin Koshien Stadium</i>)
11:30 - 12:30	LUNCH BREAK (<i>Koshien Area</i>)
12:30 - 13:15	Travel from Hanshin Koshien Stadium to Kobe Yamate Global High School <ul style="list-style-type: none"> Assembly in the ICT Classroom
13:15 - 15:00	Break and Preparation Time (<i>ICT Classroom</i>)
15:00 - 15:50	Presentation and Sharing of Reflections and Learning Experiences (<i>Auditorium</i>)
15:50 - 16:15	Closing Ceremony (<i>Auditorium</i>)

March 20, 2026	
TIME	ACTIVITIES
~	Free Day (Sightseeing and Souvenir Shopping)



ABOUT Kobe Yamate Global Junior and Senior High School



SCHOOL VISION

Kobe Yamate Global Junior and Senior High School aims **to nurture students who can contribute to society from a global perspective and respond effectively to the challenges of an increasingly complex and unpredictable world.**

The educational mission of Hamana Yamate Gakuin is to cultivate individuals who can independently shape their lives while respecting others. Based on the founding principles of **self-directed learning (自主学习)** and **emotional and character development**, the school seeks to develop students who possess both strong academic abilities and a sense of global citizenship.

In 2025, the school celebrates its 101st anniversary and begins a new chapter as Kobe Yamate Global Junior and Senior High School, strengthening its **commitment to international education and global engagement.**

EDUCATIONAL PHILOSOPHY

The school emphasizes a learning environment that **integrates theory and practice**, encouraging students to **develop critical thinking** and the **ability to apply knowledge to real-world situations.**

English is positioned as a **key communication tool** that enables students to connect with people and ideas from around the world. Through a combination of **individually optimized learning and collaborative learning**, students are encouraged to explore their strengths and pursue their academic and personal goals.

Kobe Yamate Global also promotes the development of the “3Cs”:

- **Communication** – the ability to express ideas and interact effectively with others
- **Consideration** – respect and empathy toward diverse cultures and perspectives
- **Commitment** – the willingness to take responsibility and actively contribute to society

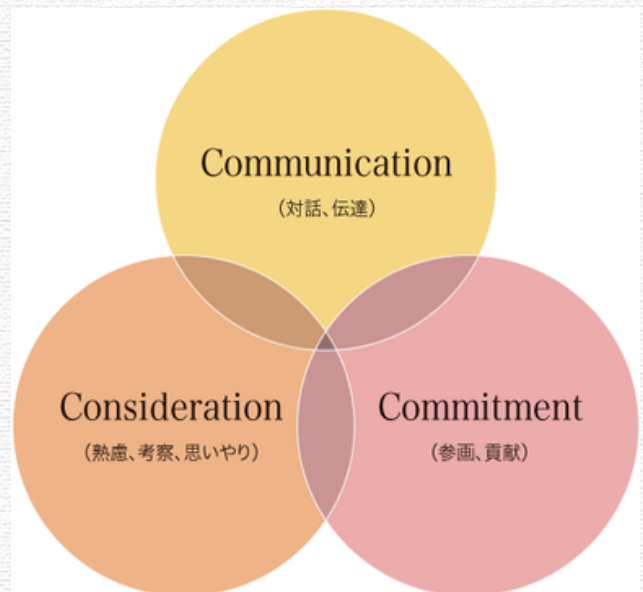
Through these values, the school seeks to cultivate students who are motivated to participate in and contribute to the global community.

LEARNING FOR A CHANGING SOCIETY

In the past, education in Japan often focused on mastering academic subjects and succeeding in entrance examinations that emphasized a single correct answer. However, modern society requires new competencies.

Global issues such as **environmental challenges, energy concerns, and social inequality** demand flexible thinking and interdisciplinary understanding. Education today must therefore move beyond subject-based knowledge and focus on developing the ability to analyze complex problems, collaborate with diverse people, and seek innovative solutions.

At Kobe Yamate Global, learning encourages students to approach issues from multiple perspectives and to develop the mindset needed to engage with global challenges.





ABOUT Kobe Yamate Global Junior and Senior High School



EDUCATION IN THE AGE OF TECHNOLOGY AND AI

Technological innovation, including **artificial intelligence and digital technologies**, is rapidly transforming society. As these technologies continue to evolve, education must prepare students not only to use them effectively but also to understand their impact.

Students are encouraged to deepen their understanding of technology while developing essential human skills such as **critical thinking, ethical judgment, creativity, and communication**. By combining **technological literacy with human-centered learning**, the school aims to equip students with the knowledge and adaptability needed for the future.

INDIVIDUALLY OPTIMIZED LEARNING

Kobe Yamate Global places strong emphasis on **individualized learning and student growth**. Through **adaptive learning systems and supportive curriculum management**, each student is encouraged to explore their own strengths, interests, and aspirations.

The school strives to achieve “**100% career satisfaction**”, supporting students in finding pathways that align with their goals and abilities.

This approach reflects the broader direction of educational reform in Japan, which emphasizes ensuring that no student is left behind and that learning opportunities are accessible and meaningful for all learners.

PREPARING STUDENTS FOR THE FUTURE

The years spent in junior and senior high school are an important stage in a student’s life. Academic learning, extracurricular activities, and interactions with classmates provide **valuable opportunities for personal growth**.

Kobe Yamate Global encourages students to **reflect on their goals, develop resilience, and pursue their aspirations**. By fostering the ability to view issues from multiple perspectives and seek optimal solutions, the school aims to prepare students to lead meaningful lives and contribute to a sustainable and peaceful society.

Through the continued efforts of its faculty and staff, Kobe Yamate Global Junior and Senior High School remains committed to supporting each student in realizing their potential and shaping their future.

FOR MORE INFORMATION:

<https://kobeyamate.ed.jp/>

6-1 Suwayama-cho, Chuo-ku, Kobe-shi, Hyogo-ken, Japan 〒650-0006

TEL: 078-341-2133 FAX: 078-341-1882



Kobe Yamate Global Academic Programs



ACQUIRE THE ABILITY TO REALIZE THE FUTURE YOU ENVISION

Kobe Yamate Global Junior and Senior High School offers three academic courses designed to support different learning styles and career goals. Each course provides opportunities for students to develop academic skills, global perspectives, and practical competencies for the future.

Global Selection Inquiry Course (Co-educational)

Designed for students who aim to enter top universities in Japan or overseas, this course combines advanced academic learning, intensive English education, and global inquiry-based study.

Selection Course (Co-educational)

A balanced academic course that supports students in building strong foundations while exploring their academic interests and career pathways.

Future Exploration Course (Girls)

A course that encourages students to explore diverse career possibilities while developing leadership, communication skills, and global awareness.

GLOBAL SELECTION INQUIRY COURSE

Intensive English Education

Students experience over 10 hours of English learning per week through classes and extracurricular activities. The program aims for CEFR B2 level proficiency by graduation, equivalent to EIKEN Pre-1 level.

Global Inquiry Learning

Through the Global Inquiry program, students explore real-world issues from interdisciplinary perspectives. They develop the ability to analyze global challenges, collaborate with diverse people, and propose creative solutions.

Native Teacher Environment

Classes are supported by both Japanese teachers and native English-speaking teachers, providing daily opportunities to communicate in English and improve practical language skills.

Individually Optimized Learning

Using AI-supported EdTech learning tools, students receive adaptive instruction tailored to their individual academic needs.

Immersion Education

Students learn certain subjects such as music, home economics, and programming through English, using the language as a communication tool rather than simply studying it as a subject.



GLOBAL LEARNING OPPORTUNITIES

Global Room

A multicultural space where students interact with native teachers and international students, practice English, and exchange cultures.

Global Exploration Camps

Held during summer and winter vacations, these programs include international exchanges, collaborative learning, and special courses in partnership with universities.

Study Abroad Programs

With over 50 years of international exchange experience, the school offers short-term and long-term study abroad programs and accepts international students from around the world.

Overseas Study Trips

Students participate in global learning experiences such as study trips to Cebu, Philippines, combining English training, cultural exchange, and SDGs-focused learning.

Japan

Introducing Japan



JAPAN IS AN ISLAND COUNTRY IN EAST ASIA KNOWN FOR ITS UNIQUE MIX OF ANCIENT TRADITIONS AND MODERN CITIES. VISITORS EXPERIENCE TEMPLES, FESTIVALS, ADVANCED TECHNOLOGY, AND BEAUTIFUL SEASONAL NATURE.

- 🇯🇵 CAPITAL: TOKYO
- 👤 POPULATION: ~125 MILLION
- 🗺️ MAIN ISLANDS: HONSHU, HOKKAIDO, KYUSHU, SHIKOKU
- 💰 CURRENCY: JAPANESE YEN (¥)
- 🗣️ LANGUAGE: JAPANESE

Kansai Highlights

📍 OSAKA 大阪

- 🏰 OSAKA CASTLE
- 🗺️ DOTONBORI STREET
- 🎬 UNIVERSAL STUDIOS JAPAN



📍 KYOTO 京都

- 🏯 FUSHIMI INARI SHRINE
- 🌿 ARASHIYAMA BAMBOO FOREST
- 🏰 KINKAKUJI (GOLDEN PAVILION)



📍 KOBE 神戸

- 🚢 HARBORLAND & PORT TOWER
- 🌸 NUNOBIKI HERB GARDENS
- 🏘️ KITANO IJINKAN DISTRICT



Transportation Guide

- 🌸 SPRING – MARCH–MAY (CHERRY BLOSSOMS)
- ☀️ SUMMER – JUNE–AUGUST (FESTIVALS & FIREWORKS)
- 🍁 AUTUMN – SEPTEMBER–NOVEMBER (COLORFUL LEAVES)
- ❄️ WINTER – DECEMBER–FEBRUARY (SNOW & ILLUMINATIONS)

JAPAN HAS ONE OF THE MOST PUNCTUAL PUBLIC TRANSPORTATION SYSTEMS IN THE WORLD.

USEFUL TIPS

- TRAINS RUN EXACTLY ON SCHEDULE
 - USE AN IC CARD (ICOCA / SUICA) FOR EASY PAYMENT
 - LAST TRAINS ARE USUALLY AROUND MIDNIGHT
- ### TRAIN & BUS ETIQUETTE
- ✓ LINE UP BEFORE BOARDING
 - ✓ LET PASSENGERS EXIT FIRST
 - ✓ SPEAK QUIETLY
 - ✓ NO PHONE CALLS INSIDE TRAINS OR BUSES
 - ✓ GIVE SEATS TO ELDERLY OR PREGNANT PASSENGERS
- ### ESCALATOR RULE IN KANSAI
- ➡️ STAND ON THE RIGHT SIDE



Japanese Etiquette

WHEN VISITING JAPAN, IT IS IMPORTANT TO RESPECT LOCAL CUSTOMS.

- ✓ BOW WHEN GREETING PEOPLE
- ✓ SPEAK QUIETLY ON PUBLIC TRANSPORTATION
- ✓ LINE UP PROPERLY WHEN WAITING
- ✓ REMOVE SHOES WHEN REQUIRED
- ✓ KEEP PUBLIC PLACES CLEAN

JAPANESE SOCIETY VALUES POLITENESS AND CONSIDERATION FOR OTHERS.



Emergency Information

📞 EMERGENCY NUMBERS

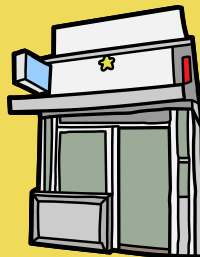
- 👮 POLICE: 110
- 🚑 AMBULANCE / FIRE: 119
- 📞 IF YOU NEED HELP, GO TO A NEARBY KOBAN (POLICE BOX).
- 🇯🇵 JAPAN VISITOR HOTLINE: 050-3816-2787

📱 USEFUL APPS AND WEBSITES:

- SAFETY TIPS FROM JAPAN NATIONAL TOURISM ORGANIZATION
- NHK WORLD NEWS APP (EMERGENCY ALERTS)
- GOOGLE MAPS FOR DIRECTIONS AND EVACUATION ROUTES

TIPS:

- ALWAYS FOLLOW INSTRUCTIONS FROM TEACHERS AND LOCAL AUTHORITIES.
- STAY WITH YOUR GROUP AND TEACHERS ALWAYS DURING ACTIVITIES.
- ALWAYS BRING YOUR PASSPORT WITH YOU. :)



Useful Japanese Phrases

こんにちは
KONNICHIWA
HELLO / GOOD AFTERNOON

すみません
SUMIMASEN
EXCUSE ME / SORRY

トイレはどこですか?
(トイレはどこですか)
TOIRE WA DOKO DESU KA?
WHERE IS THE RESTROOM?

いくらですか?
(いくらですか)
IKURA DESU KA?
HOW MUCH IS THIS?

大丈夫です
(だいじょうぶです)
DAIJOUBU DESU
IT'S OKAY / I'M FINE.

ありがとうございます
ARIGATOU GOZAIMASU
THANK YOU VERY MUCH

駅はどこですか?
(えきはどこですか)
EKI WA DOKO DESU KA?
WHERE IS THE STATION?

英語を話せますか?
(えいごをはなせますか)
EIGO O HANASEMASU KA?
CAN YOU SPEAK ENGLISH?

お願いします
(おねがいします)
ONEGAISHIMASU
PLEASE

ちょっと待ってください
(ちょっとまってください)
CHOTTO MATTE KUDASAI
PLEASE WAIT A MOMENT.

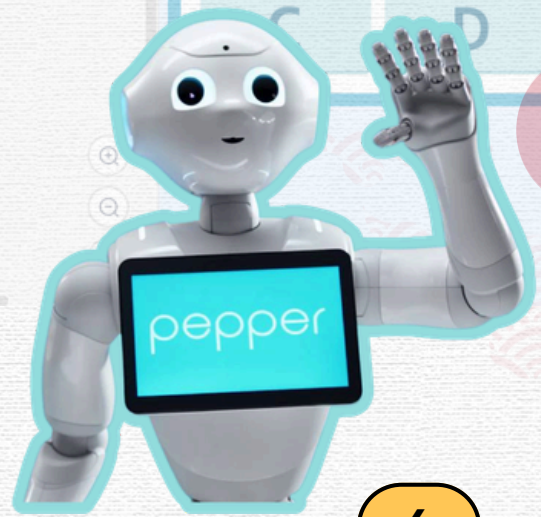
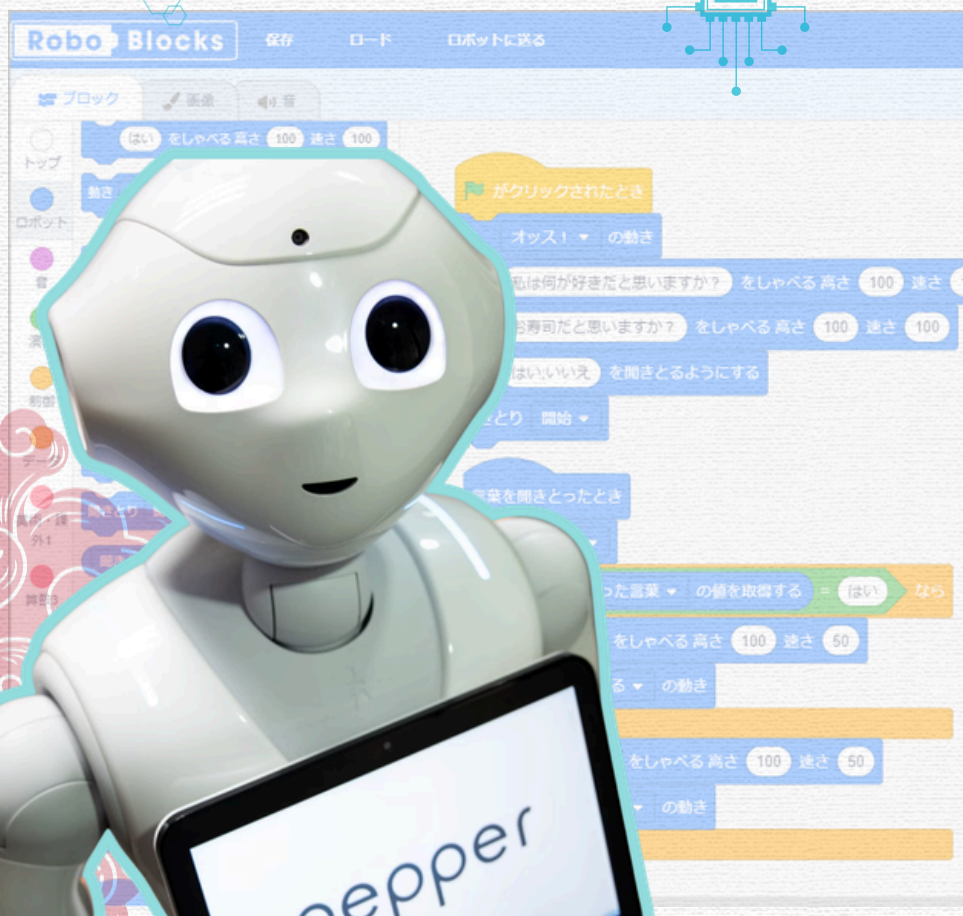
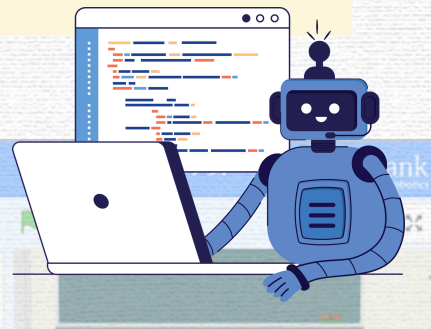
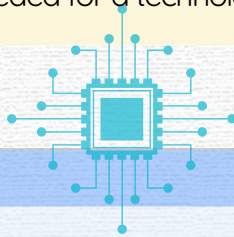
English and Programming

At Kobe Yamate Global Junior and Senior High School in Kobe, we aim to make learning engaging, hands-on, and connected to modern technology. In our classes, students are encouraged to explore, experiment, and apply what they learn in meaningful ways.

That's why we have integrated the humanoid robot Pepper into our programming classes. Rather than simply learning coding from textbooks, students bring their ideas to life by programming Pepper to speak, move, and interact.

Through platforms such as Robo Blocks, students learn important programming concepts like variables, algorithms, and logical thinking. By seeing how their code directly affects a real robot, abstract ideas become easier to understand and much more exciting to learn.

By combining robotics, mathematics, and creativity, we encourage students to collaborate, think critically, and develop the skills needed for a technology-driven future.



Reflection Sheet



1. Understanding the Lesson

Circle the answer that best describes you.

I understand how to use Robo Blocks.

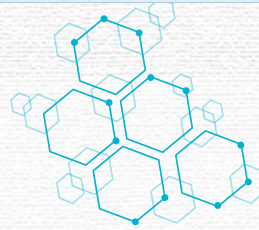
- Very well
- A little
- Not yet

I understand how to use a variable (int) in programming.

- Very well
- A little
- Not yet

I understand how the program calculates the area using the formula.

- Very well
- A little
- Not yet



2. Programming Activity

Answer the questions.

What did Pepper do when you touched its head?

What happens to the variable int each time Pepper's head is touched?

- It decreases
- It increases by 1
- It stays the same



3. Your Programming Experience

How did you feel about the programming activity?

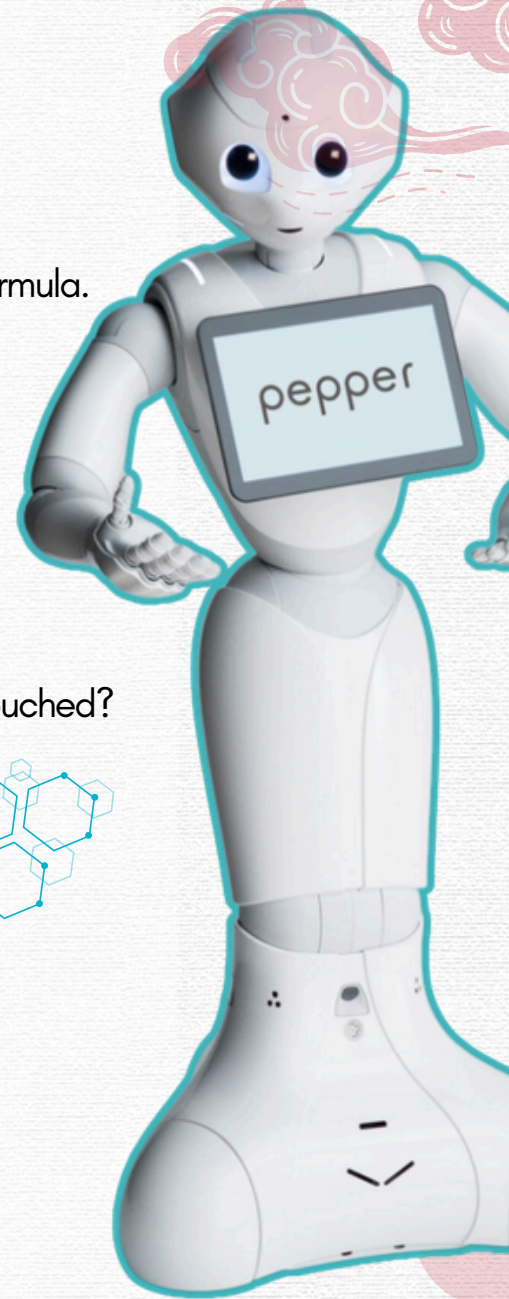
- Very interesting
- Interesting
- Difficult
- Very difficult

What was the most interesting part of today's lesson?

4. Creative Thinking

What kind of program would you like to make next with Pepper?

Example: quiz, game, music program, etc.



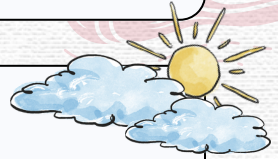
Self-Reflection



WHAT I LEARNED

MOST CHALLENGING PART

HOW I OVERCAME CHALLENGES



SOMETHING I'M PROUD OF



QUESTIONS I STILL HAVE

GOALS FOR NEXT TIME

QUESTION OF THE DAY:
WHAT DIFFERENCES DID YOU NOTICE BETWEEN JAPAN AND YOUR HOME COUNTRY DURING YOUR ARRIVAL AND TRAVEL?



DAY 3 ENGLISH AND COOKING

Let's Make Strawberry Daifuku!

I. Cultural Analysis: Understanding Food and Culture

Both Japanese and Filipino desserts often use rice. Why do you think rice became an important ingredient in desserts in both countries?

Think about the design and taste of desserts. For instance, Japanese wagashi often emphasize simplicity and seasonal beauty, while Filipino desserts are often colorful, rich, and festive. What do these differences suggest about the cultural values or traditions of each country?



II. Creative Challenge: Design a Fusion Dessert

Propose a fusion dessert combining Japanese and Filipino ideas. You can draw or describe it in the space below.

My Fusion Dessert



III. Personal Reflection: Sharing Your Culture

If you wanted to introduce your country's culture to the world using only one dessert, which dessert would you choose and why?

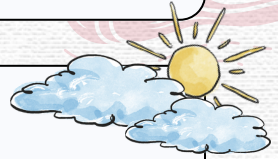
Self-Reflection



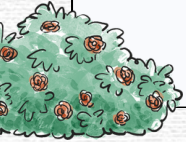
WHAT I LEARNED

MOST CHALLENGING PART

HOW I OVERCAME CHALLENGES



SOMETHING I'M PROUD OF



QUESTIONS I STILL HAVE

GOALS FOR NEXT TIME

QUESTION OF THE DAY:
WHAT NEW UNDERSTANDING DID YOU GAIN ABOUT JAPANESE CULTURE OR DAILY LIFE?



DAY 4 ENGLISH & E-SPORTS

VALORANT

At Kobe Yamate Global Junior and Senior High School, innovation meets imagination. As a forward-thinking global school in Kobe, we believe learning should be dynamic, relevant, and connected to the real world.

That's why we've integrated Valorant into our Computer Programming classes — not just as a game, but as a powerful learning tool. Through structured activities and guided analysis, students explore teamwork algorithms, strategic thinking, and problem-solving skills inspired by in-game mechanics.

By blending technology, creativity, and e-sports culture, we transform passion into purpose — empowering students to think critically, collaborate effectively, and play with confidence.

At Kobe Yamate Global, we don't just prepare students for the future — we program them to shape it.



ARE YOU READY,
AGENT?

VALORANT



ISO



AGENT MODE: ON. RESPOND TO THE QUESTIONS!



Agent, how is reacting quickly in the game similar to reacting in real life (for example, during exams or emergencies)?

Empty text box for reflection on ISO's quick reactions.

SAGE

Agent, if life were like a "game system," what good habits would you program into yourself?



Empty text box for reflection on programming good habits.

YORU

Agent, complete the sentences:

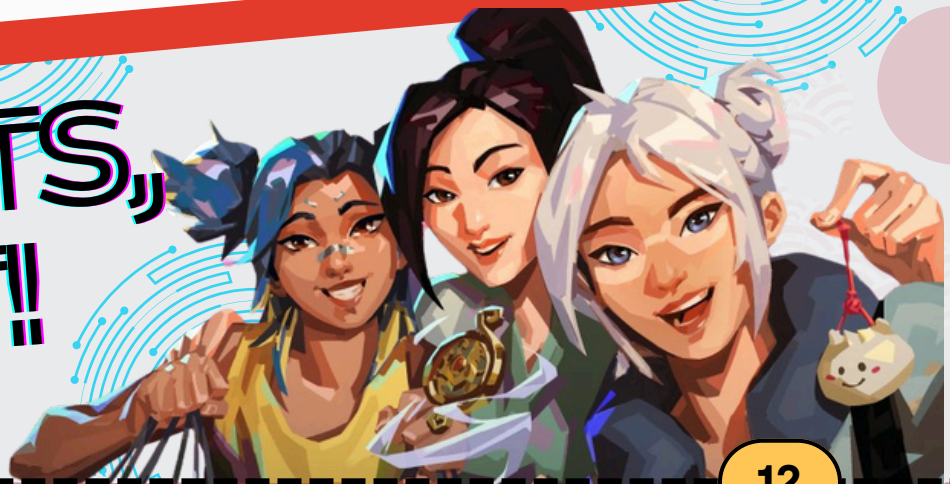
- One thing I improved today:
- One mistake I learned from:
- One real-life skill I practiced:



Empty text box for completing the reflection sentences.

CONGRATS, AGENT!

Let's have a group selfie!



✈️ Wasei-Eigo Vs. Philippine English

How well do you know these?

dirty kitchen cooler ref
sharp pencil OL high tension
load boodle fight consent
brownout baby car mail address
jet coaster rubber shoes
American dog high blood duster
mansion comfort room (CR)
carpool

Before the Activity

Choose two words above and write their meaning in your own words.

After the Activity

Which word was the most interesting for you? Why?

SPC-KYG JOINT ENGLISH ACTIVITY

1 Day - Mini Travel Itinerary

Your Name: _____

Your Partner's Name: _____

Country your partner will travel to: _____

Time	Place	Activity (Description)



English Words to Use or Watch Out For
(Wasei Eigo / Ph English)

Helpful Tips



Foods to Try!





DAY 2 PLANNING

Presentation Notes

CULTURAL EXCHANGE PROGRAM

DAY 1 EXPERIENCE AT KOBE YAMATE GLOBAL JUNIOR AND SENIOR HIGH SCHOOL

Experience Japanese school life and actively engage in cultural exchange with Japanese students. Participate in the activities, communicate with your Japanese peers, and take part in traditional cultural experiences to learn more about Japan while sharing your own Filipino culture.

Getting-To-Know-You Activity

What new thing did you learn about your Japanese classmates during the activity?

-
-
-
-
-
-

-
-
-
-
-
-

English and Programming Class

What was the most interesting thing you learned about programming or technology in today's class?

-
-
-
-
-
-

Japanese Flower Arrangement (Ikebana)

What did you learn about Japanese culture through the flower arrangement activity?

-
-
-
-
-
-

Day 2 Presentation Checklist

- Introduce a Japanese student you met and something you learned about them.
- Share one new fact you learned about Japan.
- Describe one activity or something new you learned.



DAY 3 PLANNING

Presentation Notes

CULTURAL EXCHANGE PROGRAM DAY 2 EXPERIENCE AT KOBE YAMATE GLOBAL JUNIOR AND SENIOR HIGH SCHOOL

Deepen your cultural exchange experience by actively participating in collaborative activities and sharing your own knowledge and practices with Japanese students.

Through these activities, you will strengthen communication, exchange ideas, and gain a deeper understanding of Japanese culture and daily life.

English & Cooking Class

What did you learn from cooking together, and how did the activity help you communicate with others?

- _____
- _____
- _____
- _____
- _____
- _____

English & Recreation (Dance) Immersion

How did dancing with the students and teachers help create a fun and comfortable learning environment?

- _____
- _____
- _____
- _____
- _____
- _____

Guided City Tour (Kobe – Sannomiya – Motomachi)

What place or cultural detail during the city tour interested you the most, and why?

- _____
- _____
- _____
- _____
- _____
- _____

- _____
- _____
- _____
- _____
- _____
- _____

Day 3 Presentation Checklist

- What did you cook? What did you learn?
- Describe your experience dancing with the students.
- Share one interesting place or observation.



DAY 4 PLANNING

Presentation Notes



CULTURAL EXCHANGE PROGRAM

DAY 3 EXPERIENCE AT KOBE YAMATE GLOBAL JUNIOR AND SENIOR HIGH SCHOOL

Strengthen cultural understanding and collaboration by participating in shared activities with Japanese students.

Through games, cultural experiences, and creative activities, you will build teamwork, appreciate Japanese traditions, and continue exchanging ideas and experiences with your peers.

<h3>English & E-sports (Valorant)</h3>	<h3>SPC-KYG Joint English Activity Exchange Discussion of Education Practices</h3>
<p>How did playing together help you communicate and cooperate with Japanese students?</p> <ul style="list-style-type: none"> <input type="radio"/> _____ <input type="radio"/> _____ <input type="radio"/> _____ <input type="radio"/> _____ <input type="radio"/> _____ <input type="radio"/> _____ 	<p>How did these activities help you understand similarities or differences between education practices in Japan and the Philippines?</p> <ul style="list-style-type: none"> <input type="radio"/> _____ <input type="radio"/> _____ <input type="radio"/> _____ <input type="radio"/> _____ <input type="radio"/> _____ <input type="radio"/> _____
<h3>Share Library / Cultural Sharing</h3>	<h3>Club and Cultural Experiences</h3>
<p>What artwork did you make, and how does it represent Japanese culture?</p> <ul style="list-style-type: none"> <input type="radio"/> _____ <input type="radio"/> _____ <input type="radio"/> _____ <input type="radio"/> _____ <input type="radio"/> _____ <input type="radio"/> _____ 	<p>What part of today's club activity or cultural experience did you find the most interesting, and what did it teach you about Japanese traditions or culture?</p> <ul style="list-style-type: none"> <input type="radio"/> _____ <input type="radio"/> _____ <input type="radio"/> _____ <input type="radio"/> _____ <input type="radio"/> _____ <input type="radio"/> _____

Day 4 Presentation Checklist

- Describe the teamwork and communication in playing Valorant.
- Share what you did in the SPC-KYG activity and what you learned in the exchange discussion.
- Explain your artwork or cultural sharing activity.



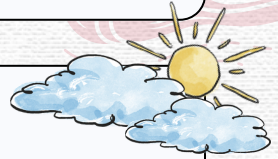
Self-Reflection



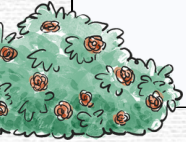
WHAT I LEARNED

MOST CHALLENGING PART

HOW I OVERCAME CHALLENGES



SOMETHING I'M PROUD OF



QUESTIONS I STILL HAVE

GOALS FOR NEXT TIME

QUESTION OF THE DAY:

WHAT IS ONE MEMORABLE MOMENT FROM TODAY THAT YOU WOULD LIKE TO SHARE WITH OTHERS BACK HOME?





GLOBAL MOBILITY PROGRAM

グローバルモビリティプログラム

学校法人 濱名山手学院

神戸山手グローバル中学校高等学校

